

ROTATE: REGRIP



ROTATE : REGRIP by Aurocity

Effortlessly reorientate labware

Function: Quickly reorientate SBS/ANSI plates with user-defined rotation from 0° to 270°

Precise: Calibrate home position for repeatable alignment

Intelligent: Collaborative ready with unique 'maintain position' and 'collision detect' safe functionality

Compact: Space-saving footprint for easy integration

Control: SiLA-compliant and digital I/O interface options

Reliable: Maintenance-free operation backed by a 12 month manufacturer warranty

Product Profile

Part Number	251004-01
Recommended Use	Rotate standard SBS/ANSI plates
Scope of Delivery	Rotate : Regrip External power supply Power cords Europe & US 2x M5x50 cap head setscrews
Warranty	12 Months

Performance

Description	Rotate SBS plates 0-270 degrees, calibrated alignment, collaborative, stop functionality
Rotation angle	0-270 deg
Calibration angle compensation	+/-10
Max Speed	30 rpm
Maximum Payload	850g
Positional Accuracy	+/- 0.5deg

Interface	
Description	SiLA 2 enabled device with serial control capabilities.
Operation Control	SiLA 2 Client
Peripheral interface	Ethernet or mini USB

Electrical	
Operating Voltage	12v DC - I _{max} : 2.3A - P _{max} : 27.6W
Power Supply	Input: 100 - 240 V AC 50 - 60 Hz
Power Connection	5.5mm x 2.1mm DC Jack

Operating, transport and storage conditions	
Operating Range	-10° ~ 50°C (14 ~ 122 F) < 85% RH non-condensing
Floor Base Requirements	Stable (resonance free) horizontal dry inside buildings even
Transportation and Storage	-10° ~ 50°C (14 ~ 122 F) < 85% RH non-condensing

General Construction	
-----------------------------	--

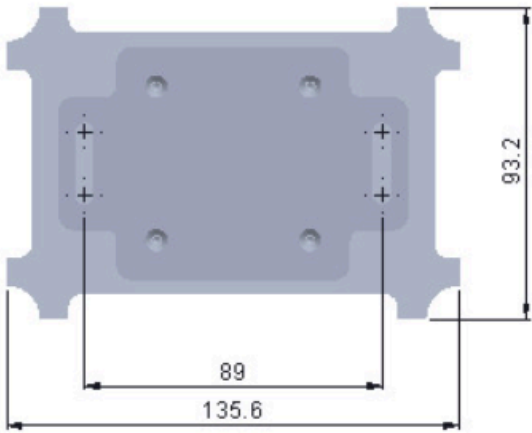
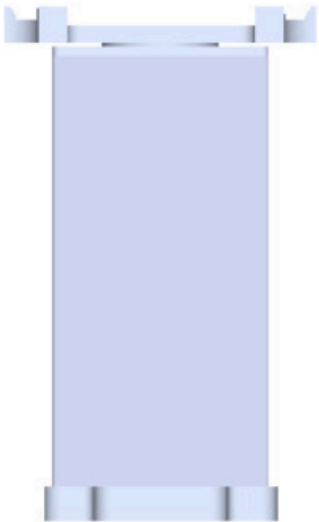
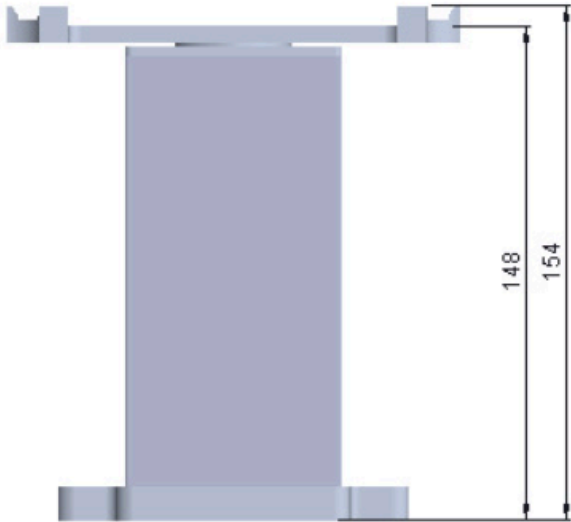
Housing Material	Anodised Aluminium
Degree of Protection	IP40

Dimensions and Weight

Dimensions	(W*D*H) 135.6 * 93.2 * 154 mm
Weight	1kg

Certifications

Regulatory Compliance	2014/35/EU, 2011/65/EU, 2014/30/EU, 2015/863/EU
-----------------------	---



Technical Specifications are subject to change without notice